

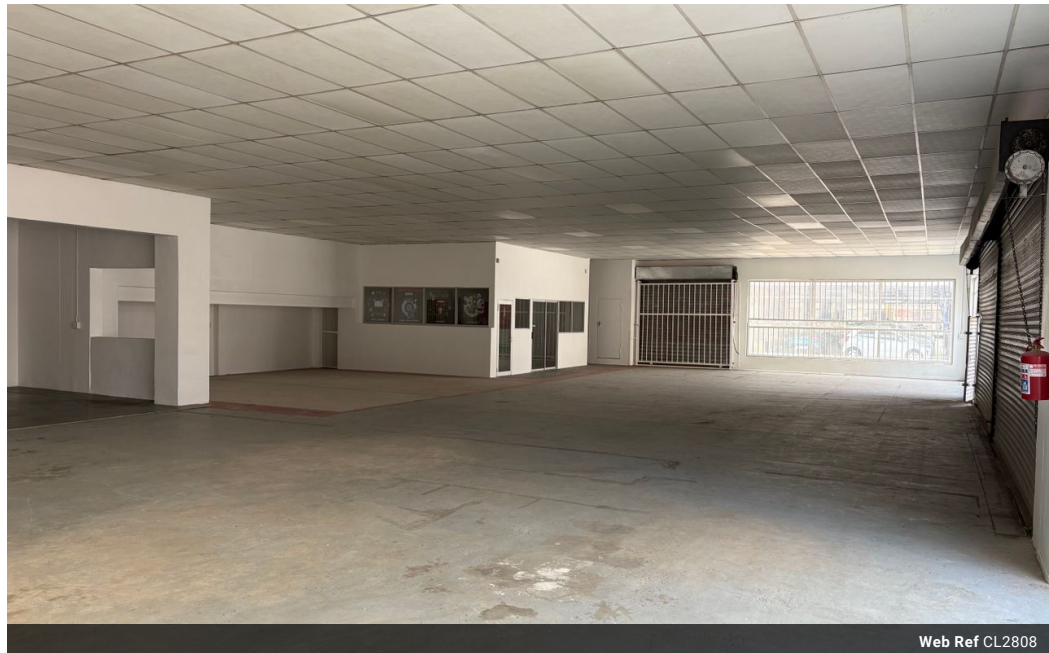


**Loy de Jager**  
082 855 9591  
loy@upsideproperties.co.za

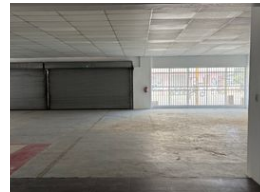
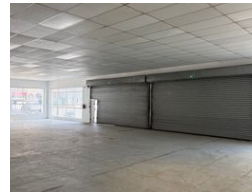
Contact Head Office

031 531 1103

11 Aubrey Drive  
Glenashley  
Durban  
4051



Web Ref CL2808



R50,000 pm

**Gross Monthly Rental** R50,000 Excl. VAT

 0  0

### 550sqm Prime Commercial Space for Lease in Durban Central – High Traffic Area

Located in the heart of Durban Central, this expansive 550sqm commercial property offers an exceptional opportunity for businesses looking to capitalize on high vehicle and foot traffic.

Its prime location makes it ideal for a wide range of commercial uses, including:

- Retail Stores: Perfect for businesses looking to engage a high-volume foot traffic audience.
- Car Showrooms: The spacious layout is perfect for showcasing vehicles and attracting customers.
- Workshops & Service Centers: An ideal space for automotive workshops, repair centers, or service facilities.
- Warehousing & Distribution: Ample space for storage and distribution needs.

This property provides excellent accessibility and visibility, ensuring your business stands out in a mature area.

### Features

**Zoning** Industrial

#### Interior

Power 3 Phase Yes

#### Sizes

Floor Size 550m<sup>2</sup>