



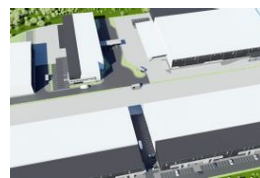
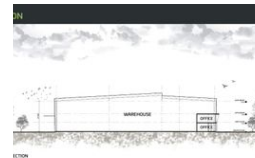
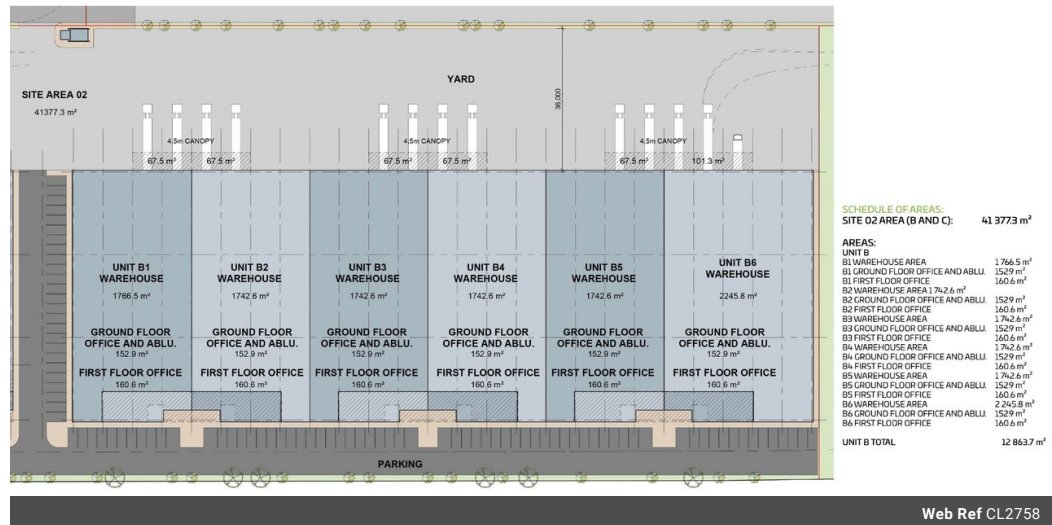
**Matthew Hayter**  
082 569 1765  
matt@upsideproperties.co.za

Contact Head Office

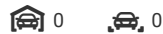
031 5311103

Suite 1  
The Corals  
7 Campbell Drive  
Umhlanga  
4319

## PLAN - WAREHOUSE B



R28,785,400



2056sqm Warehouse Development in Farrier Business Park, Western, Shongweni

Property Specifications:

TOTAL FLOOR AREA - 2056sqm  
Warehouse - 1742.6sqm  
Ground Floor Office & Ablution - 152.9sqm  
First Floor Office - 160.6  
Monthly Rent - R28,785,400 = R14000/sqm (dependant on purchaser's specs)  
12m to Eaves Height  
Super Link Access  
Sprinkler Systems  
Ample height for racking  
Multiple Roller Doors  
24 hour security

Farrier Business Park is logistics park forming part of the all new West Town development.

The N3 corridor, particularly the Shongweni region, has emerged as a key strategic area for industrial and commercial development with Westtown positioned as the closest new industrial development node to the bustling Durban Port. Its strategic

## Features

**Zoning** Industrial

### Interior

Air Conditioning Yes  
Power 3 Phase Yes

### Exterior

Security Yes

### Sizes

Floor Size 2,056m<sup>2</sup>